



With know-how to the top!

ZIRCON

Machineroomless lift

FEATURES AT A GLANCE

- Type certified in accordance with lift directive 95/16/EU and EN81-1 / A2:2004
- Duty loads from 320 kg to 1050 kg
- Travel height 35 m
- Speed 1,0 m/s and 1,6 m/s
- Synchronous gearless drive
- Doors centre opening or side opening (depends on type)
- Through car for 525 kg, 630 kg and 1050 kg
- Controller cabinet outside the shaft on uppermost landing
- Modern CAN-bus-controller
- Landing doors single skin without fire protection for basic execution
- Doors safety screen complies to EN81-70

OPTIONAL

- Evacuation control EVA
- EN81-70:2003 and EN81-70 / A1:2004
- Stone flooring 25 mm height for cabin, supplied and laid in by others
- Cabin rear wall made of safety glass
- Fire protection for landing doors complies to EN81-58 class E120 or EI60
- Fire protection for landing doors complies to GOST E60 or EI60
- Landing doors in execution framed glass without fire protection
- EN81-73:2005 LCD indicator in main landing
- EN81-1 / A3:2010
- Reduced shaft head
Headroom min = 2800 mm at speed 1,0 m/s only

CONTROLLER

BASIC VERSION

- Compact design 2000x400x250 mm (HxWxD) including plinth
- Basic position beside the uppermost landing door
- Cabinet class IP43, colour RAL 7032
- Cabinet lock with turning handle compliant with EN81-1/A2
- Adjustable footing for compensation of uneven floors
- Emergency evacuation function with indication of speed, turning direction and door zone
- Evacuation of passengers by means of UPS 230 V in case of power failure
- Intercom between cabin and controller cabinet
- RCD for controller voltage and cabin light
- One push button control down-collective

STANDARD OPTIONS

- Cabinet of stainless steel hairline finish
- Variable positioning up to max. 4,0 m away from basic position
- Levelling and re-levelling with opening/open doors
- Model compliant with EN81-70
- Plug-in type shaft illumination
- Third intercom outlet
- Gong on cabin roof
- Fire recall to main floor
- Automatic evacuation function to the next landing
- Collective-selective control
- Duplex group
- Short floor distance for min. 500 mm
- Emergency call system to EN81-28 type MEMCOM
- Fire recall LOP according to Swiss standard

CONTROL TECHNOLOGY

- The plug-and-play controller SMART-Com with CAN-bus-technology ensures very short installation time
- Pre-wired flat travelling cable
- Plug-in type control unit in pit
- Landing operation panels (LOP) and cabin operation panels (COP) pre-wired and plug-in type
- Simple commissioning with learn-drive function
- Main circuit breaker with 4 poles
- Collective fault indication
- Automatic switch off of cabin light

DRIVE TECHNOLOGY

- Field-oriented frequency inverter integrated into controller cabinet
- Controlling and operation (by keypad or laptop) directly from controller cabinet

With know-how to the top!

TABLEAUS



CABIN OPERATION PANEL




BASIC VERSION

- Face plate St. St. hairline
- LCD-display 60x110 mm, blue display
- Designation of landings: -4; -3; -2; -1; P; 0; 1; 2; 3 etc.
- Pictograms for “emergency call sent” and “emergency call received”
- Round push buttons, satinated stainless steel surface, call registration in red
- Door open and door close buttons
- Key switch, either for internal priority or for “firemode”

OPTIONAL

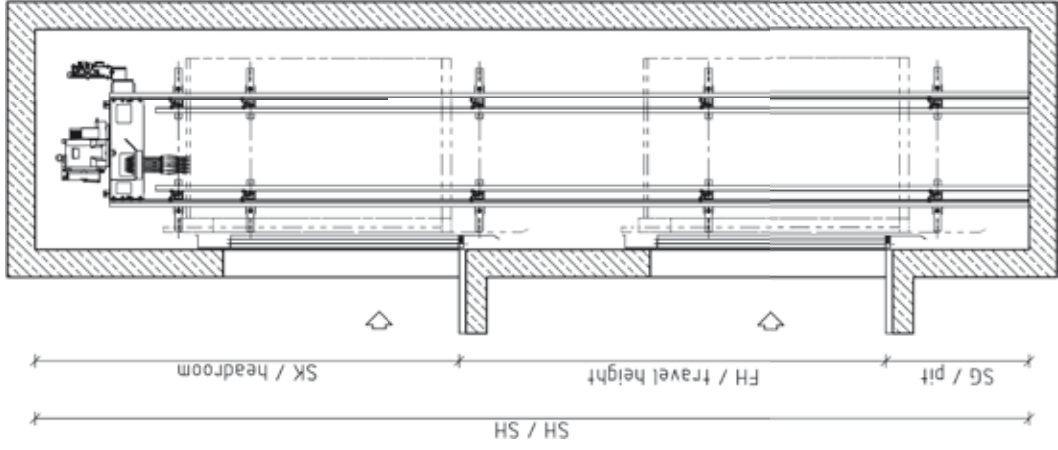
- Buttons compliant with EN81-70
- Voice synthesiser

LANDING OPERATION PANEL

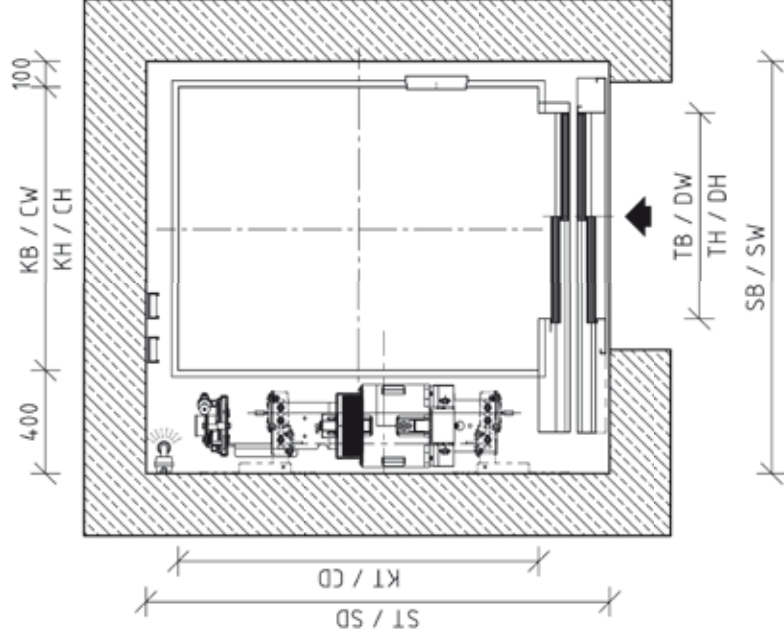
	STANDARD	OPTIONAL	OPTIONAL
210x100x18 mm (HxWxD) 	One push button	Two push buttons	Key switch instead of one push button or key switch in separate LOP**
335x100x18 mm (HxWxD) 		One push button with 30-mm-high dot matrix indicator	Key switch instead of push button with dot matrix indicator 30 mm high
		Two push buttons with 30-mm-high dot matrix indicator Optional: LCD display*	
210x100x18 mm (HxWxD) 		Separate dot matrix indicator, height 30 mm Optional: LCD display*	Separate LCD indicator 40x70 mm

SPEED 1,0 M/S, DUTY LOADS 320 KG UP TO 1050 KG

VERTICAL SECTION



HORIZONTAL SECTION



June 2011
Technical data subject to change

EDITION

RANGE OF PRODUCTS SPEED 1,0 M/S

	kg	320	450	525	630	630	850	1000	1050
Duty load									
Persons		4	6	7	8	8	11	13	14
Speed V	m/s	1,0	1,0	1,0	1,0	1,0	1,0	1,0	1,0
Travel max.	m	35	35	35	35	35	35	35	35
Through cabin	yes/no	no	no	yes	no	yes	no	no	yes
Number of stops	pcs.	12	12	24	12	24	12	12	24
Suspension		2:1	2:1	2:1	2:1	2:1	2:1	2:1	2:1
Shaft*									
SW min	mm	1400 (1450)	1500	1500	1600	1600	1900	1600	1600
SD min	mm	1350	1600	1850	1750	1950	1850	2450	2650
Pit min	mm	1050	1050	1050	1050	1050	1100	1100	1100
Pit max	mm	1950	1950	1950	1950	1950	1950	1950	1950
Headroom min**	mm	3500	3500 (2800)	3500	3500 (2800)	3500 (2800)	3500 (2800)	3500 (2800)	3500 (2800)
Doors									
DW	mm	700 (800)	800	800	900 (800)	900 (800)	900 (800)	900 (800)	900 (800)
DH	mm	2000 (2100)	2000 (2100)	2000 (2100)	2000 (2100)	2000 (2100)	2100 (2000)	2100 (2000)	2100 (2000)
Type***		Sematic C	Sematic C	Sematic C	Sematic C	Sematic C	Sematic C	Sematic C	Sematic C
S2L/R		x	x	x	x	x	x	x	x
S2Z		-	o	o	o	o	o	o	o
Cabin									
CW standard	mm	900	1000	1000	1100	1100	1400	1100	1100
CD standard	mm	1000	1250	1300	1400	1400	1400	2100	2100
CH clear height****	mm	2100 (2200)	2100 (2200)	2100 (2200)	2100 (2200)	2100 (2200)	2200 (2100)	2200 (2100)	2200 (2100)
Drive (gearless)									
P nominal	kW	4,0	4,5	4,5	4,5	4,5	7,2	7,2	7,2
I nominal	A	11,4	12,3	12,3	12,3	12,3	21,3	21,3	21,3
Motor starts	S/h	180	180	180	180	180	180	180	180
Duty cycles	%	40	40	40	40	40	40	40	40

* Shaft dimensions based on door type "C" marked with x (the minimum dimensions refer to the max. permissible cabin weight)

** For CH max. 2200 and 2300 mm

*** For reduced shaft head options only doors type S2L/R possible. Option of doors S2Z may require bigger shaft width.

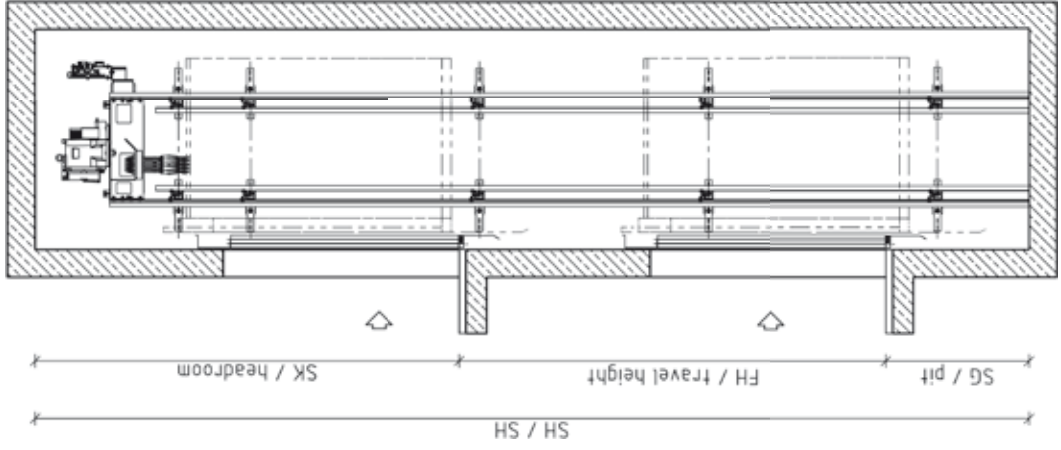
**** With ceiling IL LED CH internal height 2200 mm resp. 2300 mm

o = optional
x = standard

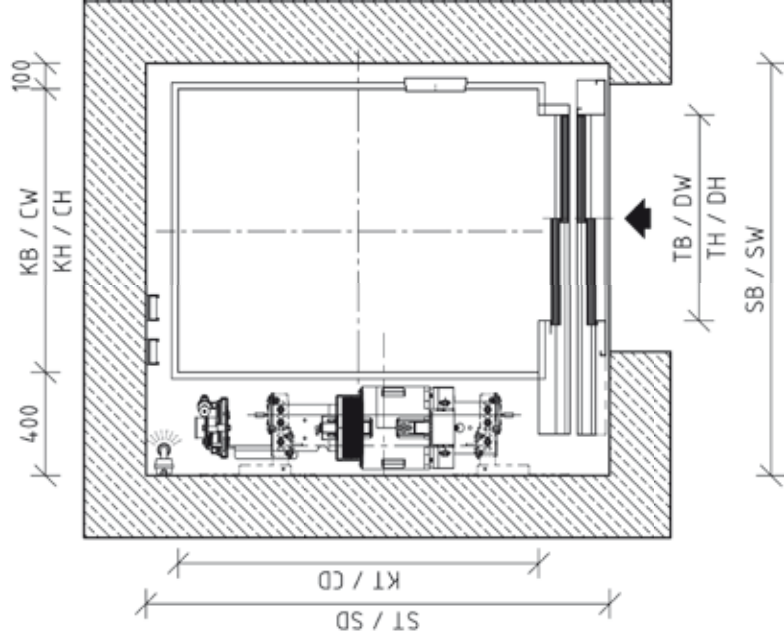
Edition June 2011 . Technical data subject to change

SPEED 1,6 M/S, DUTY LOADS 450 KG UP TO 1050 KG

VERTICAL SECTION



HORIZONTAL SECTION



June 2011
Technical data subject to change

EDITION

RANGE OF PRODUCTS SPEED 1,6 M/S

	450	525	630	630	850	1000	1050
Duty load	kg	450	525	630	850	1000	1050
Persons		6	7	8	11	13	14
Speed V	m/s	1,6	1,6	1,6	1,6	1,6	1,6
Travel max	m	35	35	35	35	35	35
Through cabin	yes/no	no	yes	no	no	no	yes
Number of stops	pcs.	12	24	12	12	12	24
Suspension		2:1	2:1	2:1	2:1	2:1	2:1
Shaft*							
SW min	mm	1500	1500	1600	2000	1600	1600
SD min	mm	1600	1850	1750	1850	2450	2650
Pit min	mm	1400	1400	1400	1400	1400	1400
Pit max	mm	1950	1950	1950	1950	1950	1950
Headroom min**	mm	3700	3700	3700	3700	3700	3700
Doors							
DW	mm	800	800	900 (800)	900 (800)	900 (800)	900 (800)
DH	mm	2000 (2100)	2000 (2100)	2000 (2100)	2100 (2000)	2100 (2000)	2100 (2000)
Type		Sematic C	Sematic C	Sematic C	Sematic C	Sematic C	Sematic C
S2L/R		x	x	x	o	x	x
S2Z		o	o	o	x	o	o
Cabin							
CW standard	mm	1000	1000	1100	1400	1100	1100
CD standard	mm	1250	1300	1400	1400	2100	2100
CH clear height***	mm	2100 (2200)	2100 (2200)	2100 (2200)	2200 (2100)	2200 (2100)	2200 (2100)
Drive (gearless)							
P nominal	kW	6,9	6,9	6,9	10,3	10,3	10,3
I nominal	A	19,2	19,2	19,2	27,0	27,0	27,0
Motor starts	S/h	180	180	180	180	180	180
Duty cycles	%	40	40	35	40	35	35

* Shaft dimensions based on door type "C" marked with x (the minimum dimensions refer to the max. permissible cabin weight)

** For CH max. 2200 and 2300 mm

*** With ceiling IL LED CH internal height 2200 mm resp. 2300 mm

o = optional
x = standard

Edition June 2011. Technical data subject to change

ZIRCON MATRIX OF FINISHES

Material	Illumination IL LED	Illumination IL 200	Illumination IL 203	Cabin Walls	Car front return	Cab. door panels	Flooring	Handrail	Landing doors / panels / frames	Notice
LED spots (roof RAL 9016)	X									CH clear height 2200 resp. 2300 mm
Fluorescent tube		X	X							
Skinplate (white 2-K001)		S	S							CH clear height 2100 resp. 2200 mm
2-S012 / 2-S051		HS	HS	X	X	X			X	
2-S016		XL	XL	X	X	X			X	
2-S002				X	X	X			X	
2-S005				X	X	X			X	
2-S008				X	X	X			X	
2-S042				X	2-S012	X			X	
2-S043				X	2-S012	X			X	
2-K011				X	X					
2-K012				X	X					
2-K013				X	X					
2-K014				X	X					
2-K015				X	X					
2-K016				X	X					
2-K017				X	X					
2-K018				X	X					
Anti-drumming				X						
Fan V2	X	X	X							
Hatch		X	X							Escape hatch 500x700 with safety contact
ZINKAL				X	X					Sheet steel with zinc primer for local decoration
RAL 7032						X			X	primed
2-G010							X			Flooring rubber
2-G014							X			
2-G016							X			
2-G020							X			
2-G022							X			
2-R012							X			Flooring artificial stone
2-R014							X			
2-R015							X			
COX40I				X				X		side OR rear
COX40IC				X				X		ONLY rear wall with glass wall
COX40IG				X				X		
COX40ICG				X				X		
Mirror				X						ONLY rear wall (EN81-70 with handrail)
Glass wall				X						ONLY rear wall
Flooring natural stone							X			by others max. 25 mm

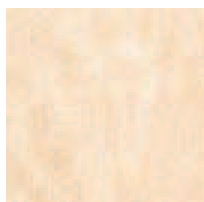
With know-how to the top!

VIEW ON CABIN FINISHES

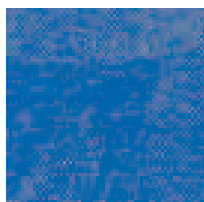
CABIN WALLS SKINPLATE (side+rear+front return / refer to Matrix)



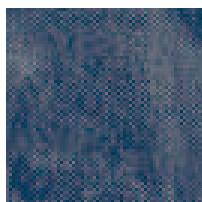
2-K011
Azzurro PPS14



2-K012
Beige DT30SMA



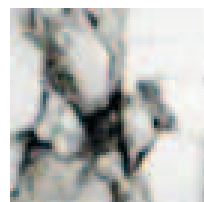
2-K013
Azzurro maculato PPS30



2-K014
Blue maculato PPS31



2-K015
Rosso maculato PPS28



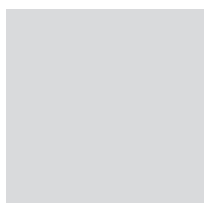
2-K016
Bianco maculato PPS51



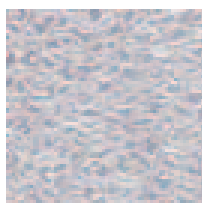
2-K017
Rigato bianco PPS3



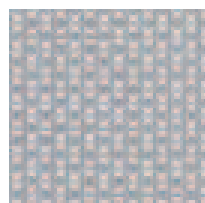
2-K018
Titanio F12PPS



Zinkal
sheet steel
(refer to Matrix)



2-S002
Elephant skin D42 – AISI
304 2R (BA)



2-S005
Linen D25
AISI 304 2R (BA)



2-S008
Karo D21
AISI 304 2R (BA)



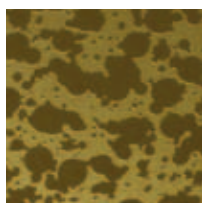
2-S012
Hairline
AISI 304 2B



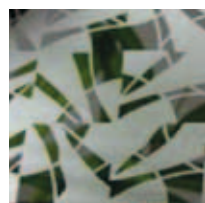
2-S051
Hairline
AISI 441



2-S016
Inox Mirror No7 –
AISI 304 2R (BA)



2-S042
Stainless steel etched



2-S043
Stainless steel etched

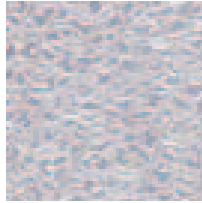
VIEW ON CABIN FINISHES

CABIN AND LANDING DOORS (panels AND frame)

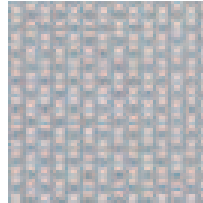
FLOORING



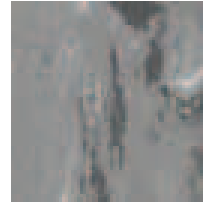
RAL 7032
primed



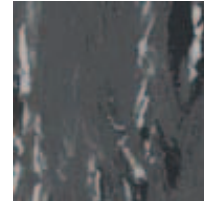
2-S002
Elephant skin
D42 – AISI 304 2R (BA)



2-S005
Linen D25
AISI 304 2R (BA)



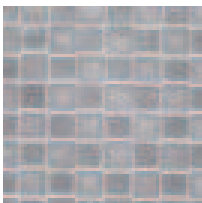
2-G010
Classic Imperial 002



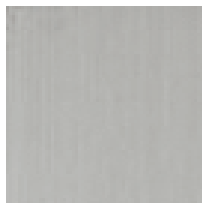
2-G014
Classic Imperial 013



2-G016
Classic Imperial 016



2-S008
Karo D21 AISI 304 2R (BA)



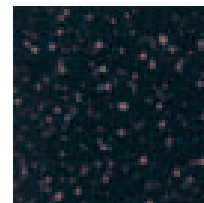
2-S012
Hairline
AISI 304 2B



2-S051
Hairline
AISI 441



2-G020
Contract Omega 603



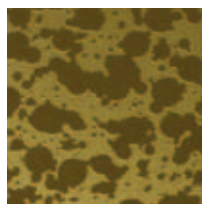
2-G022
Contract Omega 615



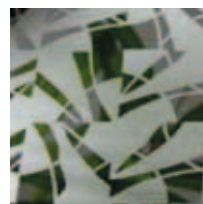
2-R012
Rocksolid 617



2-S016
Inox Mirror No7 –
AISI 304 2R (BA)



2-S042
Stainless steel etched



2-S043
Stainless steel etched



2-R014
Rocksolid 671



2-R015
Rocksolid 677

With know-how to the top!

VIEW ON CABIN FINISHES

HANDRAIL (stainless steel)



COX40I / COX40IG

Polished stainless steel handrail, 40 mm diam, removeable from inside



COX40IC / COX40ICG

Elbow stainless steel handrail, 40 mm diam, removeable from inside

CABIN WITH MIRROR ON REAR WALL
(EN81-70 WITH HANDRAIL)

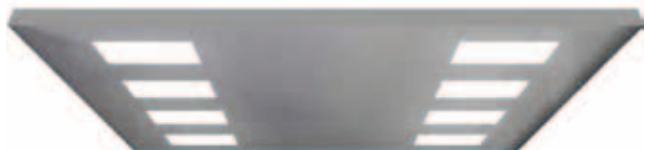


CEILING AND ILLUMINATION



IL LED

LED's integrated into cabin roof, roof powder coated white RAL 9010



IL 200S

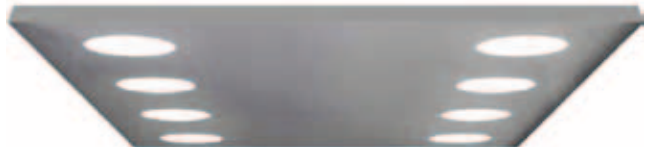
Suspended ceiling collapsible with plexiglass, lined with skinplate white K001

IL 200HS

Suspended ceiling collapsible with plexiglass, stainless steel hairline 2-S012

IL 200XL

Suspended ceiling collapsible with plexiglass, lined with polished stainless steel



IL 203S

Suspended ceiling collapsible with plexiglass, lined with skinplate white K001

IL 203HS

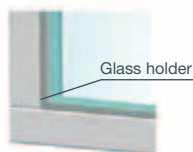
Suspended ceiling collapsible with plexiglass, stainless steel hairline 2-S012

IL 203XL

Suspended ceiling collapsible with plexiglass, lined with polished stainless steel

CABIN REAR WALL MADE OF SAFETY GLASS

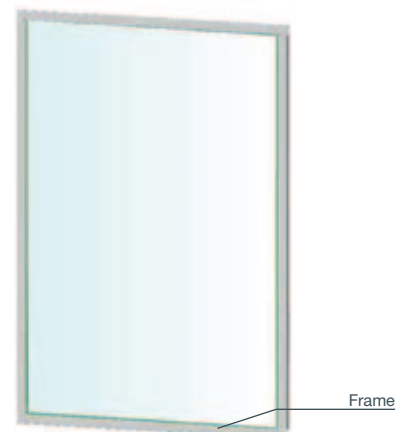
Internal view



Glass holder



External view



Frame

With know-how to the top!

ZIRCON

ZIRCON

Machineroomless lift



LM Liftmaterial GmbH
Gewerbestraße 1, Landsham, D-85652 Pliening (near Munich)
Phone +49 89 909979-0, Fax +49 89 9043143, info@lm-liftmaterial.de
www.lm-liftmaterial.de